



Interactive Function

By doing telescopic motion, the motion unit can not only present the content of the screen in three dimensions, but also sense the movements of the audience and make interactions. Support event-triggered interaction, real-time interaction and other methods to bring real-time fun and participation to the audience.

Strong Weather Resistance

Withstand severe weather such as typhoons, heavy rains, sand and dust, high temperatures, and severe cold temperature.



Camel Series

3D Robotic LED | Indoor Robotics | Outdoor Robotic

Wave screen, also known as robotic matrix display. It combines the physical telescopic movement with the virtual content of the video to create a creative 3D effect and bring a strong visual impact to the audience. 3D robotic can cooperate with interactive devices such as radar and somatosensory to carry out human-computer interaction. Compared with traditional single flat display devices, it can bring users a more interesting and realistic immersive interactive experience.

About Shenzhen Spectrum Technology Co., Ltd.

Tel: 0755-28223083 E-mail: sales@spectrum-sz.com Web: www.spectrumdisplay.cn / www.spectrum-sz.com

Spectrum is specializing in customize outdoor/indoor LED and LCD display solutions.

Spectrum has over 10 years of experience in design and manufacture LED/LCD display products.

Spectrum's LED production line are equipped with the latest/most advanced automatic machines and well-equipped devices.

Production line can support monthly production capabilities of 2000 sqm.



@sz-spectrum



Shenzhen_spectrum



shenzhen_spectrum



shenzhen spectrum



shenzhen_spectrum

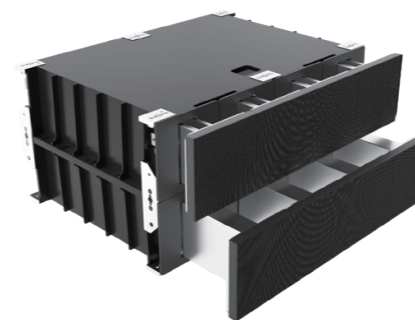
SPECTRUM

SPECTRUM

Specifications

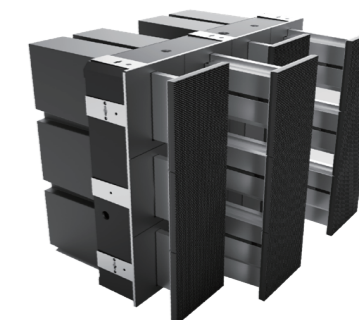
Series	Indoor 3D Robotic			Outdoor 3D Robotic
	Model	128-300-I	160-200-I	320-300-I
Pitch	Indoor-P1.78	Indoor-P1.98	IndoorP2	Outdoor-P10
LED Module Dimension	128x128	160x160	320x160	495x245
Gap between Units	0.5(0.3~0.7)	1(0.5~1.5)	1.5(1~2)	5(3.5~6.5)
Unit Display Dimension	128x128 (0.0164m ²)	160x160 (0.0256m ²)	320x320 (0.102m ²)	495x495 (0.25m ²)
Resolution of Unit	72x72	80x80	160x160	48x48
Cabinet Dimension	514x257 (4x2)	644x483 (4x3)	643x643 (2x2)	1000x1000 (2x2)
Cabinet Thickness	380	320	380	1400
Max. Forward Stroke	300	200	300	600
Max. Forward Speed	400	300	300	800
Min. Forward-back Cycle Time	<0.7	<0.7	<1	<1.5
Unit Qty per Sqm	61	39	9.8	4
Weight per Sqm	160kg	104kg	77kg	180kg
Max. Power Capacity per Unit	2030	1741	1284	1745
Power Supply	≤3KW:220V Single phase ≥3KW:380V Three phases/Five wires			380V Three phases /Five wires
Screen Brightness	≥700			≥7000
Ambient Temperature	0~40℃			-10~60℃
IP Rating	IP55			IP65
Environmental Attention	No etchant gas, No inflammable gas, No oild mist and dust			
Heat Dissipation	Open self-cooling (with fan cooling)			Semi-closed Self-cooling (with fan cooling)

Features



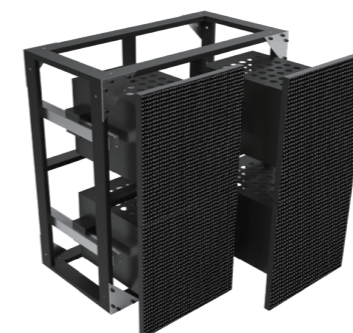
Modular Design

514x257mm 8-in-1 independent die-casting aluminum cabinet, more accurate and faster installation



Multiple Noise Reduction Design

Adopt closed-loop stepping drive system, effectively reduce 70% noise



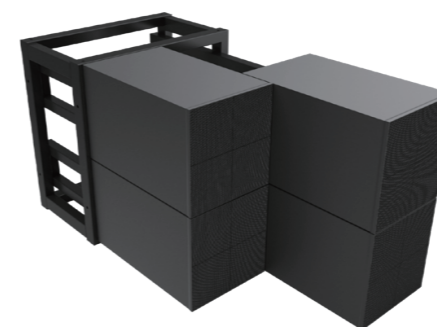
Front Maintenance Ultra-Thin Design

Front maintenance ultra-thin design suitable for embedded compact installation



Precision Machining Technology

Industrial-grade linear guide rails are used to ensure that the module gap is only 1.5mm



Forward Stroke

The forward stroke can reach 600mm, which makes the 3D visual effect more realistic



Independent Development

The digital content editing software specially suitable for the SPECTRUM wave screen simplifies the production process of movies and actions, and makes the creative output as simple as a 3D game.