



Humming Bird Series

LED Fine Pitch | HB Series

Why Spectrum LED ?

Shenzhen Spectrum Technology Co.,Ltd is a state-level high-tech enterprise. Spectrum provide service of creative LED display solutions with integrating designs, manufacturing and installation. Our products are strictly implemented the regulation in accordance with the ISO9001 certification system, certify international pass, domestic CE, ETL, CCC, UL, CUL, SASO certifications and other related quality certifications.

With the progress of technology and media, higher resolution demand has become a trend. Spectrum has the latest advance SMD production facility for superior small pixel and quality display operation. The biggest advantage is to improve the display resolution and the whole large screen is seamless stitching at the same time.

About Shenzhen Spectrum Technology Co., Ltd.

Tel: 0755-28223083 E-mail: sales@spectrum-sz.com Web: www.spectrumdisplay.cn / www.spectrum-sz.com
Spectrum is specializing in customize outdoor/indoor LED and LCD display solutions.
Spectrum has over 10 years of experience in design and manufacture LED/LCD display products.
Spectrum's LED production line are equipped with the latest/most advanced automatic machines and well-equipped devices.
Production line can support monthly production capabilities of 2000 sqm.



@sz-spectrum



Shenzhen_spectrum



shenzhen_spectrum



shenzhen_spectrum

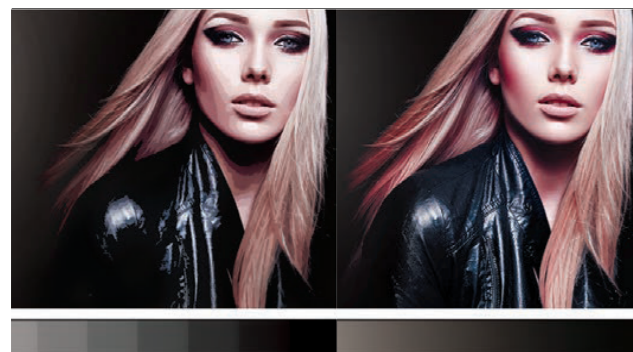


shenzhen_spectrum

SPECTRUM

SPECTRUM

Features



Color Restoration And Visual Impact

Color dynamic range is over 4% to create more delicacy to the display picture. Visual impact makes you feel the life like world closer.



Energy Conservation

Energy efficiency conversion is up to 95%. By Combining the light sensor probe, the screen brightness will automatically adjust according to the environment brightness and power consumption will reduce by 40%. With The lowest power consumption to present the clearest picture.



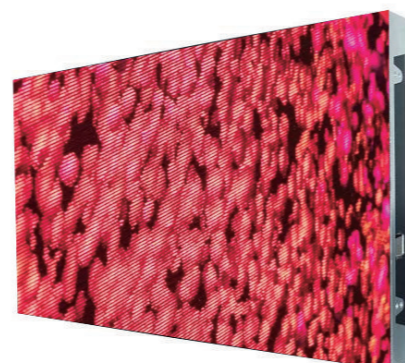
Double Security

Support power backup, sending card backup, receiving card backup, socket dual backup. Provide double screen display security guarantee.



Large Viewing Angle · No Sense of Granularity

New innovate display design creates comfortable eyes protection for long time viewing. Display has 180° super wide angle to form focal length of viewing and centered all viewing from any positions. This creates a golden vision in line with the proportion for visual and mainstream HD standards.



On-site Design Offers Multiple Possibilities

- Better smooth radian implementation
- Without adding custom lock or box assembly parts the standard box can realize 5° innerarc
- Support remote relay switching equipment
- Easily splintered into 720p, 1080p, 2160p, 3840p and other standard resolution on large display.



Clear Information

- Fine Pixel with 4k Display Resolution
- High Refresh rate & Splicing System
- Fine Transmitter, Optical and Sensor parameters

Specifications

	Pixel	0.6mm	0.9375mm	1.25mm	1.5625mm	1.875mm
Basic Parameter	Module Resolution	500 x 281	320 x 180	240 x 135	192 x 108	160 x 90
	Module Size	300 x 168.75 x 15mm				
	Cabinet Size	600 x 337.5 x 75mm				
	Cabinet Weight	6.5kg				
	Brightness	≥600 cd/m ²				
System Parameter	Horizontal View Angle	(H)140°/(V)140°				
	View Distance	≥3m				
	Control Model	Synchronization Control				
	Lifetime	50,000 Hour				
Working Parameter	Protection level	IP20				
	Working Temperature	-20 °C ~ 50 °C				
	Working Humidity	10%~80% RH no Condensation				
	Storage Temperature	-20 °C ~ 60 °C				
	Max Consumption	680 W/m ²				
	Average Consumption	270 W/m ²				

Highlights

- Achieve 20000:1 contrast effect, improve light and dark contrast, enhance picture details
- Adopt high dynamic HDR technology, the color gamut coverage reaches the DCI-P3 standard
- Support real-time detection of temperature, humidity, smoke sensing and other information
- Support remote relay switch equipment power supply

LED Trend

As LED display technology becomes more mature, it continues to penetrate into the commercial and civil markets based on its characteristics of high brightness, high refresh rate and low power consumption. LED displays will continue to expand their applications to smartwatches, smartphones, automotive displays, augmented reality (AR) and virtual reality (VR).